

GEBERIT DUOFIX CARRIER

TECHNOLOGY ENABLING DESIGN



**KNOW
HOW**
INSTALLED



KEEP SKIN
GLOWING
With the power
of natural ingredients
and essential oils
it keeps your skin
hydrated and healthy

PARADISE OF LIPS
Lip Balm
With the power
of natural ingredients
and essential oils
it keeps your lips
hydrated and healthy



GEBERIT IS BEHIND IT ALL!

With millions of installations throughout the world, the message is clear: the Geberit Duofix Carrier allows unique design without reductions in reliability, performance, installation flexibility, and maintenance. Taking the toilet off the floor changes everything. And Geberit is behind it all!

RELIABILITY

As with any plumbing component located behind a finished wall, absolutely zero defects can be tolerated. That's why Geberit rigorously tests all the components of our system. We're so confident in the reliability of our in-wall systems that we offer a limited lifetime warranty on every Geberit carrier frame and flush tank.

INSTALLATION

The carrier is designed for installation using a minimum of standard tools and attaches easily to wall framing studs at just four points. Drainage and venting are no different from a conventional floor-mounted toilet. The Geberit system is integrated and allows unique design, with mounting plans for all types of applications, including pre-wall, room-height, and free-standing wall installations.

ALL IT TAKES IS A FEW SIMPLE STEPS

For over 50 years, Geberit has designed and manufactured concealed mounting frames for wall-hung toilets and sinks. The sophisticated Geberit System makes installation quick and easy and maintenance practically nonexistent.

Consider this brochure a starting place, a means to spark your own creativity. Because once you've decided to install the Geberit System, your possibilities are endless.



1 Remove the old toilet and tank.



2 Open the wall and floor.



3 Route the drain and supply; prepare the wall studs.



4 Install the tank and carrier.



5 Install the wallboard and wall finishes.



6 Mount the flush plate and wall-hung toilet.



Easy to Clean

With no obstacles on the floor, no tank to clean, and no exposed pipework, a wall-hung toilet makes cleaning easy.



Saves Space

The Geberit in-wall system takes up less space than a conventional toilet, and the concealed installation offers flexibility in small spaces.



Strong and Durable

The wall-hung toilet bolts simply and securely to the mounting frame. This sturdy system holds up to 880 lbs.



Saves Water

Geberit dual-flush saves water – a cost-effective solution for the home and a more sustainable concept for the environment.



Easy to Maintain

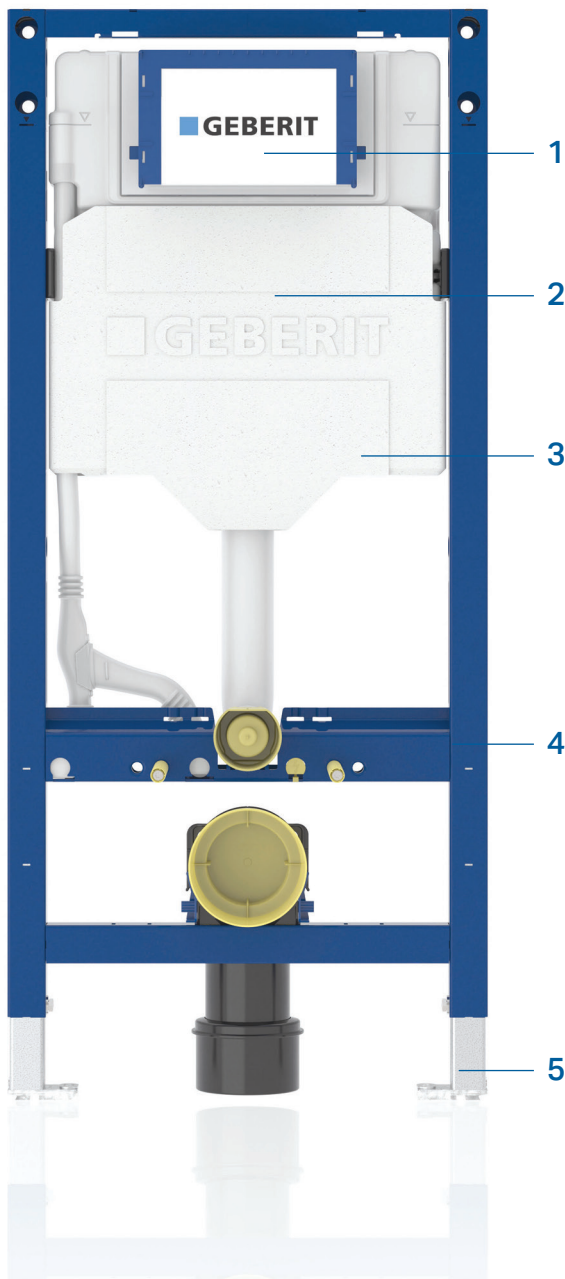
The Geberit one-piece tank is guaranteed not to leak. The stylish flush plate offers easy access to all internal components.

MAINTENANCE

The Geberit Duofix Carrier is virtually maintenance free, requiring no tools for simple changeouts of components. Filling and flushing valves carry a 10-year warranty and are fully accessible. In addition, the wall-hung bowl design opens up the entire floor for easy cleaning.

PERFORMANCE

The Geberit system utilizes water saving, dual-flush technology. In addition, the gravity flushing system meets all requirements for use with third party listed low-consumption toilets 1.28 or 1.6 GPF single-flush, 1.28/0.8 GPF or 1.6/0.8 GPF dual-flush, as well as certified High Efficiency Toilets (HET). For a list of compatible toilets, download our *Clean Design* brochure at geberitnorthamerica.com.



1 Easy Access

All internal components, including supply stop and fill and flush valves are accessible through decorative actuator flush panels.

2 Engineered Performance

Anti-siphon fill valve designed for short refill times with minimal noise. Water-saving flush valve for 1.28 or 1.6 GPF single-flush, 1.28/0.8 GPF or 1.6/0.8 GPF dual-flush consumption. All materials meet chemical resistance standards. Both fill and flush valves engineered for long life.

3 Concealed Tank Technology

HDPE one-piece, integrated gravity flush tank is individually leak-tested for reliability and reinforced to prevent collapse. Tank insulated to prevent condensation ("sweating") inside the bathroom wall.

4 Strong Support Frame

16-gauge, powder-coated, structural-steel tubing rated to 880 lbs.(400 kg) without damage to finished wall or carrier unit. Exceeds ASME A112.6.2 strength requirements.

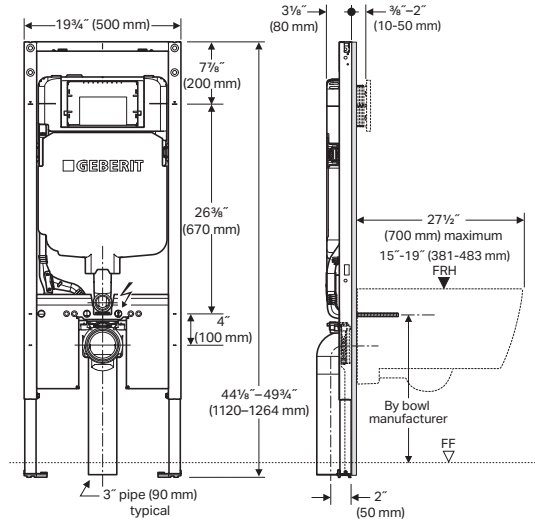
5 Integrated Height Adjustment

Bowl rim height adjustments from 15" (381 mm) to 19" (483 mm) allow flexibility in settings. Set the bowl height based on user preference or accessibility requirements.

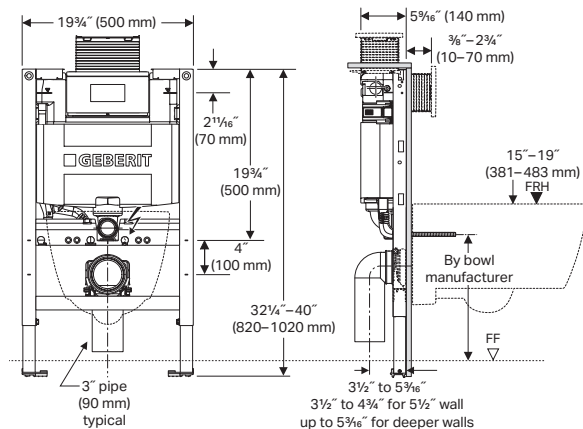
Ready to get started installing Geberit systems? Visit geberitnorthamerica.com to view and download complete technical information, including specification sheets.

The Geberit Duofix Carrier fits in standard 2x4 or 2x6 construction. See the diagrams on these pages for complete mounting dimensions. In-wall systems for toilets and urinals are actuated with a manual or hands-free flush plate, available in a wide range of styles and finishes. Toilet systems offer front- or top-mounted flush actuation. Geberit in-wall systems are compatible with a variety of ceramic plumbing fixtures from many different manufacturers.

With Sigma Concealed Tank, 2"X 6" Installation



With Omega Concealed Tank, 2"X 6" Installation



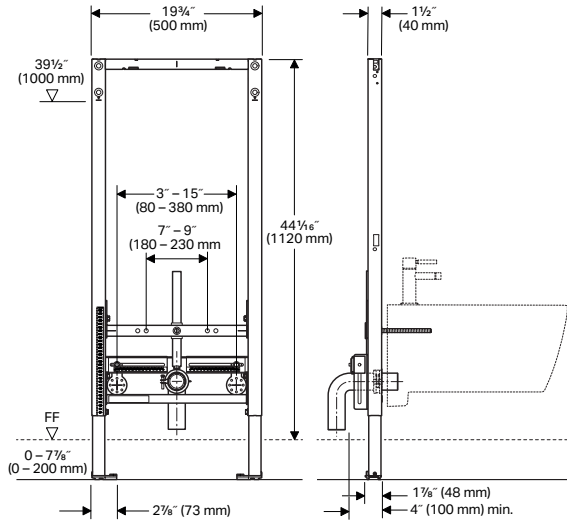
Product Specifications

Rough In	2" x 6" or 2" x 4" wood construction
	19-3/4" steel framing
Water Supply	Flow diameter no smaller than 1/2" (13 mm) copper tube
	Minimum flow pressure of 2 PSI (0.01 MPa)
Toilet Bowl	2-hole wall-hung
	1.28 or 1.6 GPF third party listed low-consumption
	1.28/0.8 GPF or 1.6/0.8 GPF dual-flush
Actuator Flush Panels	Die-cast zinc, molded plastic, glass or fabricated stainless steel and plated to preserve material integrity

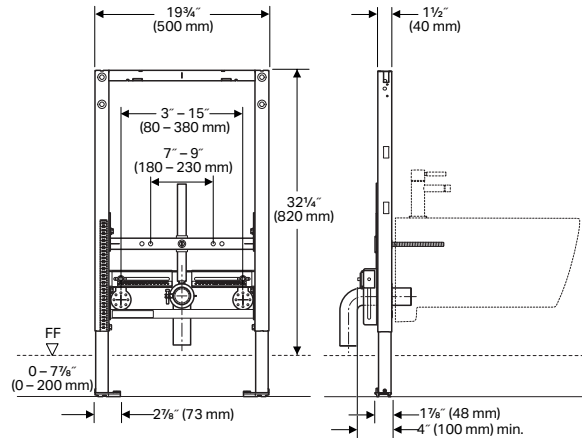
Complete information about compatible toilet bowls and actuator flush panels is available at geberitnorthamerica.com.

WALL-HUNG BIDETS

Standard Height Installation

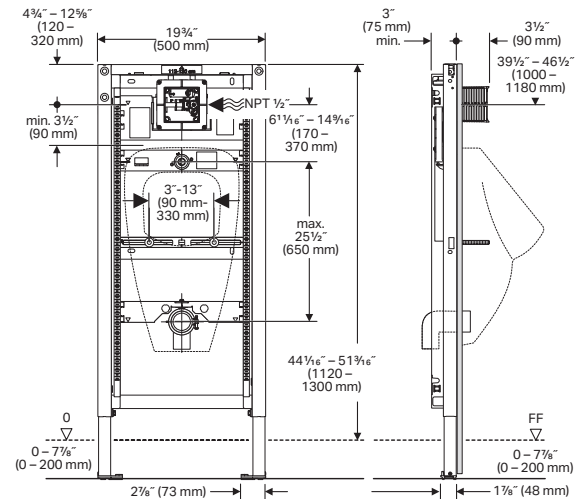


Short Height Installation



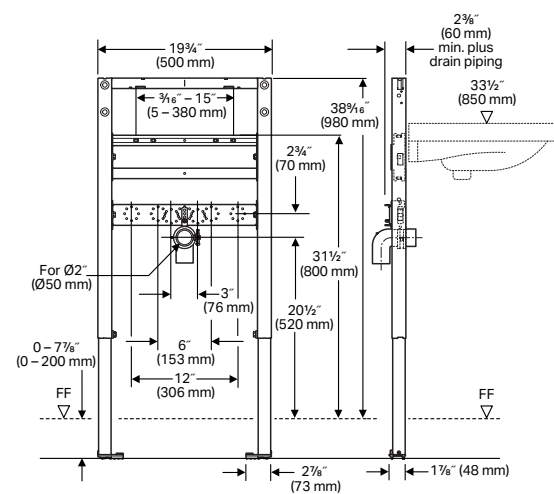
WALL-HUNG URINALS

Short Height Installation



WALL-HUNG SINKS

Short Height Installation



WARRANTY

Limited lifetime warranty on tank and carrier,
10-year warranty on fill valve and flush valve.
One-year warranty on actuator flush panels.
See geberitnorthamerica.com for complete
warranty details.

Complies with the latest editions of:

ASME: A112.6.2, A112.19.5, A112.19.2
ANSI Z124.4
CSA B125.3
ANSI/ASSE 1002
IAPMO PS-50
UNAR / UNAR-HET
ASME A112.19.2 and WaterSense® compliant
when matched to properly approved bowl
State of Massachusetts listed



Geberit

2100 S. Clearwater Drive
Des Plaines, IL 60018
USA

P 800-566-2100

F 847-849-1845

www.geberitnorthamerica.com

Geberit North America is part of the Geberit Group, a European market leader and global provider of sanitary technology. Located in Des Plaines, Illinois, Geberit North America provides concealed tank and carrier systems for wall-hung and floor-mounted toilets and fixtures. Geberit systems improve the look of any bathroom by hiding the unsightly toilet tank. Replacing a standard tank and toilet with the Geberit system results in more usable space, improved hygiene and better accessibility. The unique dual-flush valve saves water and is practically maintenance free. Geberit also offers cable-controlled bath waste and overflows in a variety of designer finishes. Critical working parts are outside the waterway, ensuring years of trouble-free operation.

For more information, contact your Geberit sales representative, call 800/566-2100 or go to **geberitnorthamerica.com**.

