

# GEBERIT INSTALLATION SYSTEM

## Wall-Hung Lavatories/Washbasins

### SPECIFICATIONS

In-Wall Duofix carrier system for 2-hole wall-hung sinks. System shall fit within minimum 3" (76 mm) framing wall or plumbing chase, with wood construction or steel framing members placed 19 3/4" (500 mm) apart. Framing members should



be capable of supporting a 330 pound (150 kg) load without damage to the wall. The carrier frame shall be adjustable for fixture heights from 31 1/2" (800 mm) to 39 1/2" (1000 mm) and for mounting anchors from 2" (50mm) to 15" (380 mm). All components shall be compliant with applicable codes and product standards.

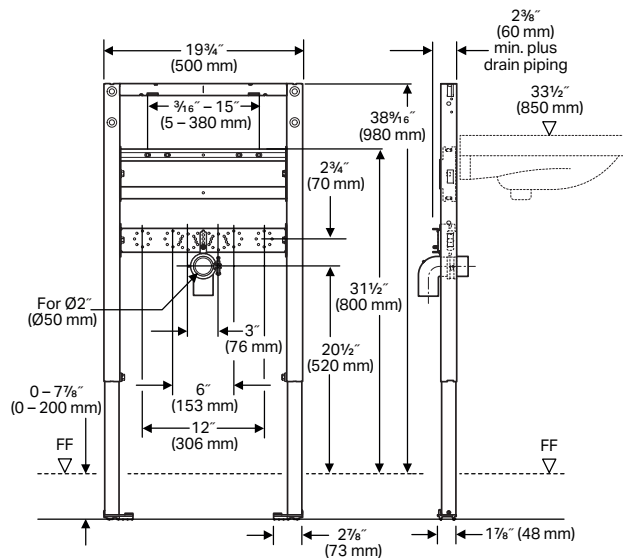
### FEATURES

- 16-gauge, powder-coated, structural steel tubing rated to 330 lbs (150 kg) without damage to finished wall or carrier unit
- Fixture rim height adjustments from 31 1/2" (800 mm) to 39 1/2" (1000 mm)
- Frame height: 38 9/16" (979 mm)
- Installation hardware included
- Matches height of 11.012.00.X

### WARRANTY


- Limited lifetime warranty on carrier

Model No.	Description	
111.490.00.1	Carrier frame, short height (2025 and before)	
111.490.00.2	Carrier frame, short height (2025 and later)	



#### NOTES:

1. Geberit Duofix Carrier for 2-hole wall-hung lavatory fixtures only
2. Refer to [geberitnorthamerica.com](http://geberitnorthamerica.com) for latest list of code-approved compatible lavatory fixtures

Products marked with  comply with the American Disabilities Act (ADA) when installed per the requirements of the latest ADA Accessibility Guidelines (ADAAG) and/or ICC/ANSI A117.1.



#### ARCHITECT/ENGINEER APPROVAL

Job Name: \_\_\_\_\_

Date: \_\_\_\_\_ Quantity: \_\_\_\_\_

Model Specified: \_\_\_\_\_

Variations Specified: \_\_\_\_\_

Customer/Wholesaler: \_\_\_\_\_

Contractor: \_\_\_\_\_

Architect: \_\_\_\_\_



Geberit  
2100 S. Clearwater Drive  
Des Plaines, IL 60018  
USA

P 847-803-7777  
F 847-849-1845

[www.geberitnorthamerica.com](http://www.geberitnorthamerica.com)